

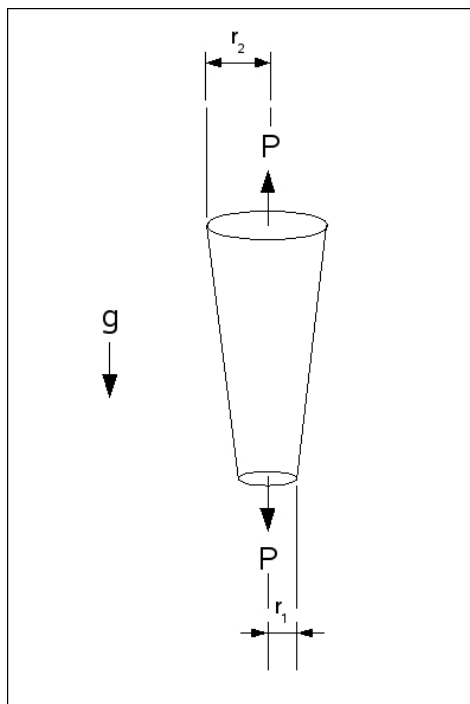
ENGR 2143 Strength of Materials

Spring 2008

HW#2 Due Wednesday Feb. 6, 2007

SP 2.1

The rod has a slight taper and length L . It is suspended from the ceiling and supports its own weight and a load at the end P . Determine the displacement of its end due to both of these loads. The material has a specific weight γ (weight/volume) and a modulus of elasticity E .



Work the following problem(s) from your text-book.

2.8, 2.19, 2.24, 2.26, 2.35, 2.39, 2.63, 2.72, 2.77, 2.99.